



WEST BANK ACCESS RESTRICTIONS

SEPTEMBER 2014

PHYSICAL CLOSURES

- Internal Checkpoint (fully staffed)
- Green Line Checkpoint*
- Internal Partial Checkpoint
- Road Gate normally closed
- Road Gate normally open
- Observation Tower*
- Earthmound
- Roadblock
- Tunnel/Underpass*
- Earth Wall
- Road Barrier
- Trench

WEST BANK BARRIER

- Constructed
- Under Construction
- Planned Route
- Planned Re-routing
- Barrier Gate

CLOSED AND RESTRICTED AREAS

- Israeli military base
Access is prohibited
- Israeli firing zone and Jordan Valley Military Buffer Zone
Access is prohibited
-



PHYSICAL CLOSURES

WEST BANK BARRIER

CLOSED AND RESTRICTED AREAS

PALESTINIAN COMMUNITIES

— Israeli unilaterally declared Jerusalem municipal boundary

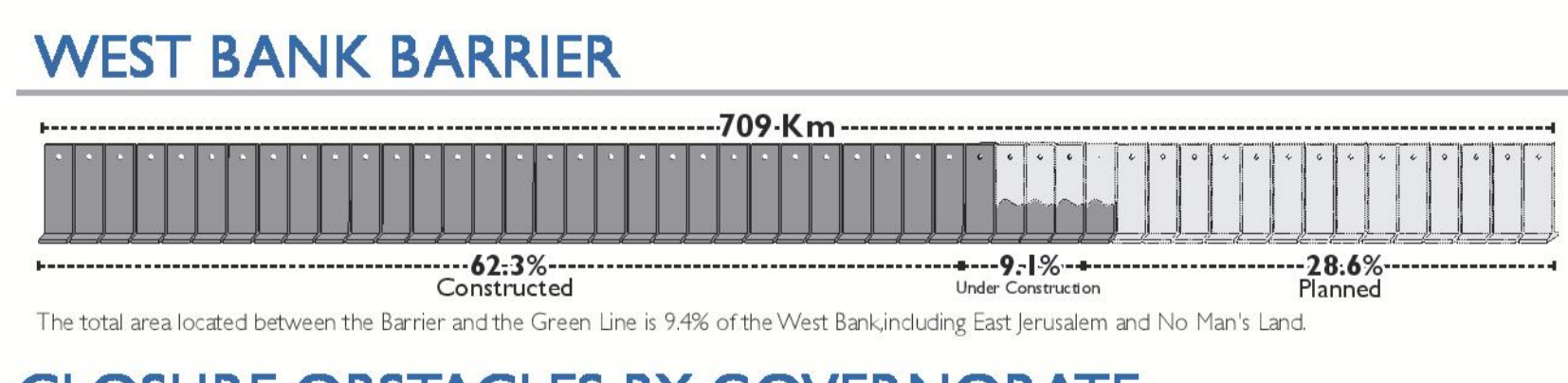
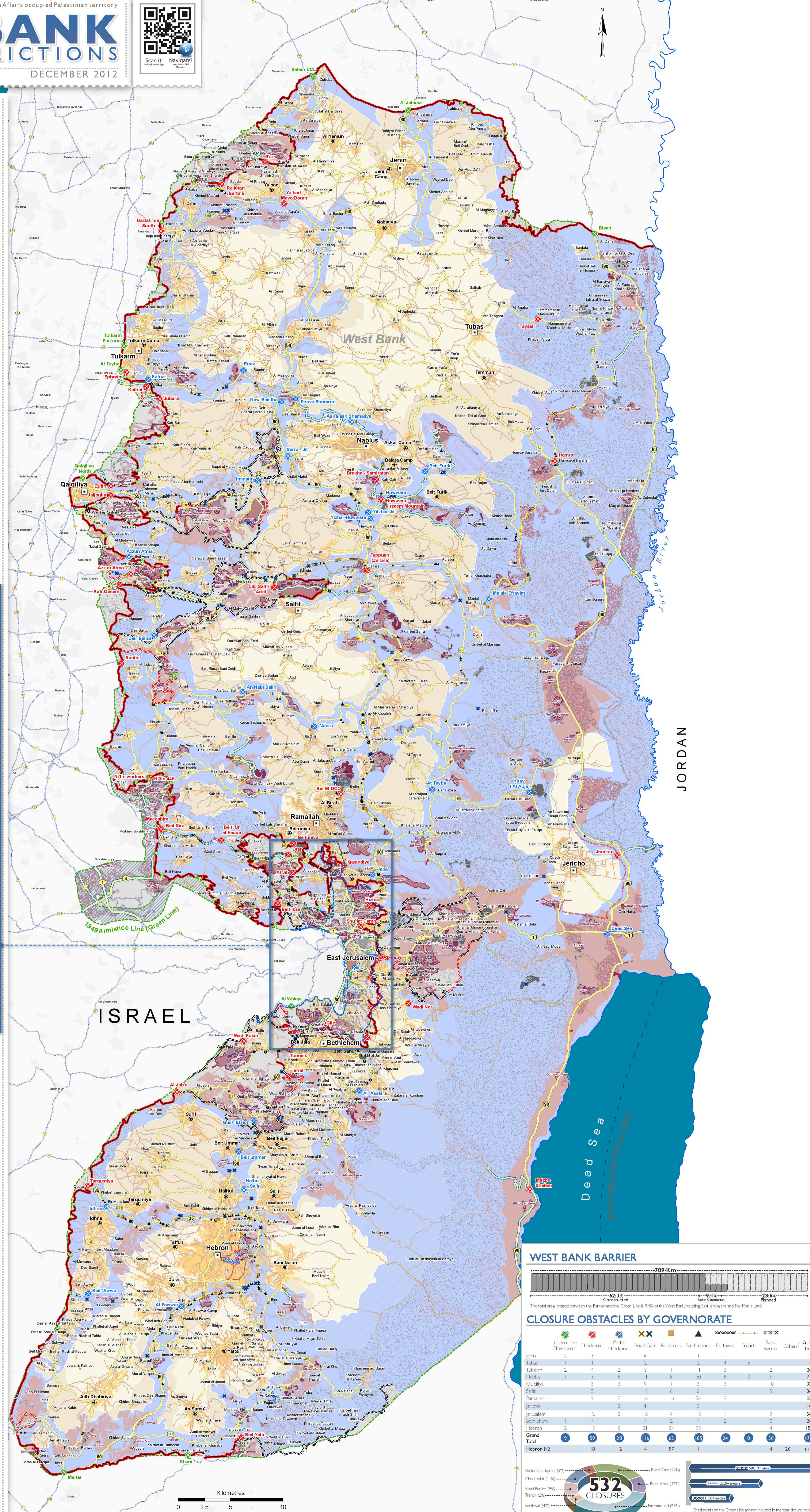
ROADS

OSLO INTERIM AGREEMENT (1994-1999)

	1. Full Palestinian civil and security control
	2. Full Palestinian civil control and joint Israeli-Palestinian security control
	3. Hebron Agreement
	4. Full Israeli control over security, planning and construction

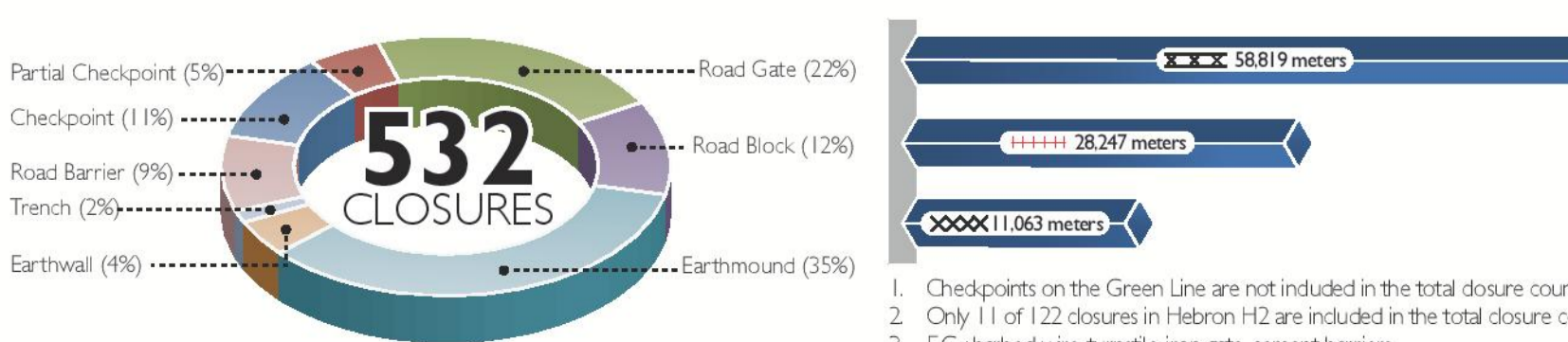
EAST JERUSALEM

OCUPIED PALESTINIAN TERRITORY



CLOSURE OBSTACLES BY GOVERNORATE

	Green Line Checkpoint*	Partial Checkpoint	Road Gate	Roadblock	Earthmound	Earthwall	Trench	Road Barrier	Others†	Grand Total
Jenin	2	3	1	1	1	1	1	1	1	11
Tubas	1	1	2	2	2	4	5	2	1	24
Tulkarm	2	4	2	3	1	11	3	2	2	30
Nablus	3	8	11	8	30	8	3	6	1	77
Qalqilya	3	3	9	1	3	3	10	2	1	32
Salfit	3	1	12	6	6	3	8	8	3	36
Ramallah	9	3	16	16	36	2	11	1	1	93
Jericho	1	2	4	3	3					10
Jerusalem	12	2	15	4	13	1	9	5	1	56
Bethlehem	1	7	1	7	2	7	2	0	2	26
Hebron	2	13	6	31	24	73	4	1	1	151
Grand Total	9	59	28	116	64	185	64	8	50	532
Hebron H2	18	12	4	57	1			4	26	127



1. Checkpoints on the Green Line are not included in the total closure count.
 2. Only 11 of 122 closures in Hebron H2 are included in the total closure count.
 3. EG: barbed wire, turbine, iron gate, cement barriers.